

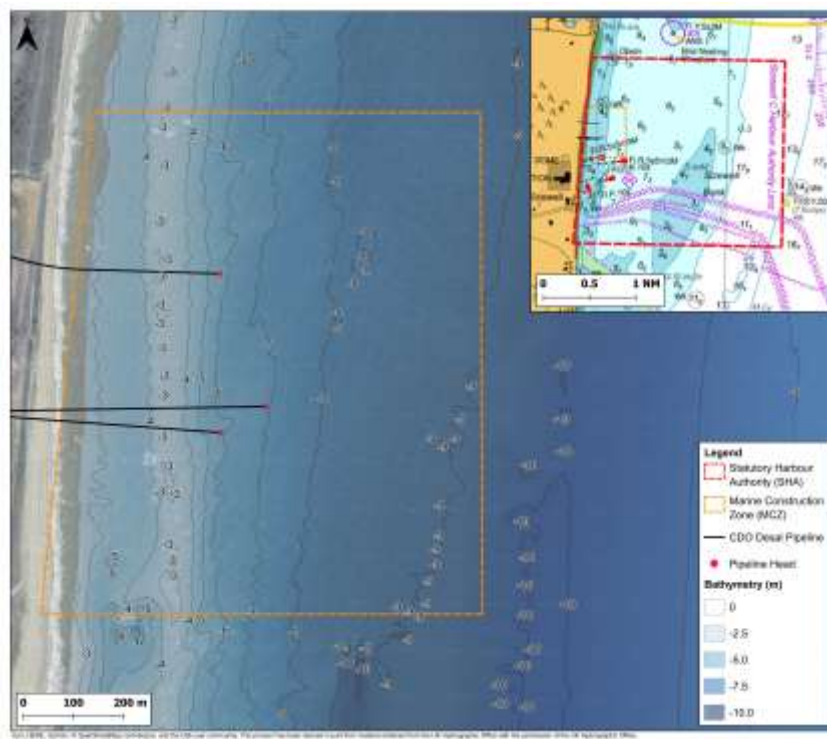
Sizewell C Notice to Mariners No 19 of 2026

Combined Drainage Outfall – Pipe Pull Works and Associated Closure of Sizewell C Harbour to All Vessels Other than Construction Vessels

Mariners are advised that -

On or about the 16th of April 2026, works will commence to pull in the pipe to line the Combined Drainage Outfall (CDO). These works are complex and will involve several vessels and the jack-up barge NP497. Diving operations will take place and a floating pipeline approximately 500m in length will be towed into the harbour.

The majority of the works will take place within the Marine Construction Zone (MCZ), but the floating pipe towage and installation will extend into the greater harbour – **this necessitates the closure of the entire harbour to all vessels other than those engaged in construction works for the duration of the pipe-pull to ensure navigational safety is maintained**. This period of closure will be kept to a minimum and is likely to be around 48-72 hours. **Fishing vessels** normally launched from the beach south of the Sizewell A intake/outfall towers may launch their boats during this period provided that they do not proceed more than 100m eastward from the beach launch point and then head south to clear the harbour. The remainder of the MFRZ will be included in this closure.



The first element of the works will entail the positioning of the JUB NP497 close to the north side of the MBIF jetty head works recently installed by the JUB Excalibur as shown in **Figure 1**. The multicat C-

Odyssey will then moor to the four-point mooring spread to support NP497 in the pipe-pull which will involve diving operations.

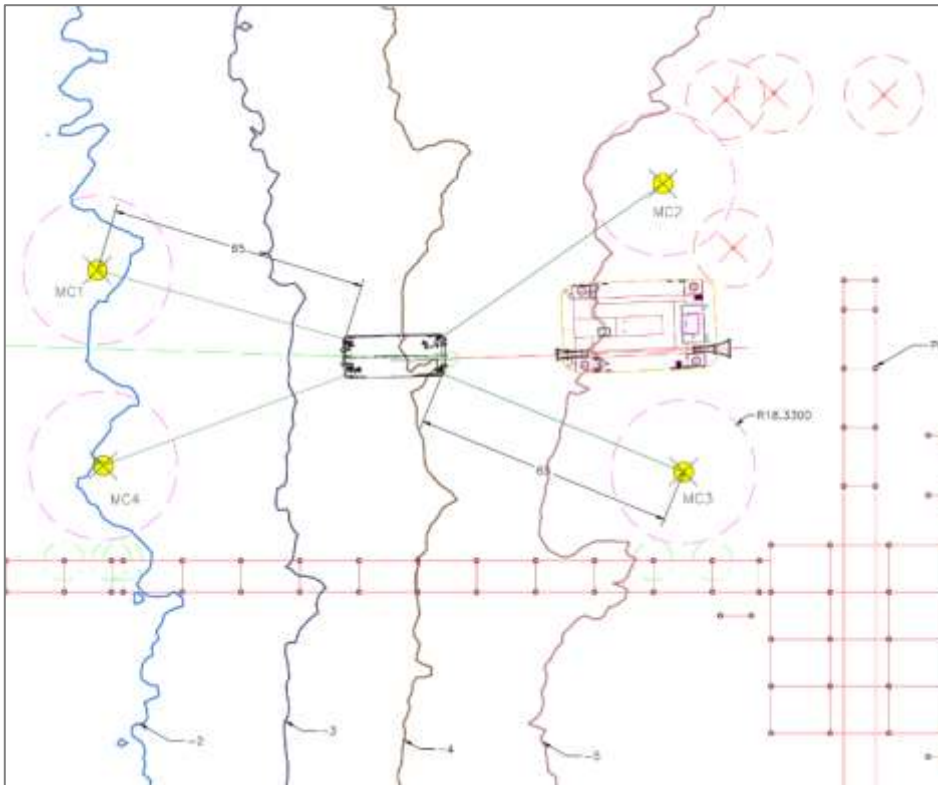


Figure 1 - Location of JUB N497 & C-Odyssey Mooring Spread

CDO Punchout Location	52°13.287' N	001°37.749' E
CDO Mooring Clump 1	52°13.298' N	001°37.671' E
CDO Mooring Clump 2	52°13.312' N	001°37.797' E
CDO Mooring Clump 3	52°13.272' N	001°37.802' E
CDO Mooring Clump 4	52°13.271' N	001°37.672' E



C-Trojan



MTS Valour



Paul D

Meanwhile the 500m long floating pipe will be under tow from its storage in the River Stour, and the tow will be conducted by the **C-Trojan, MTS**



Kirkwall Bay

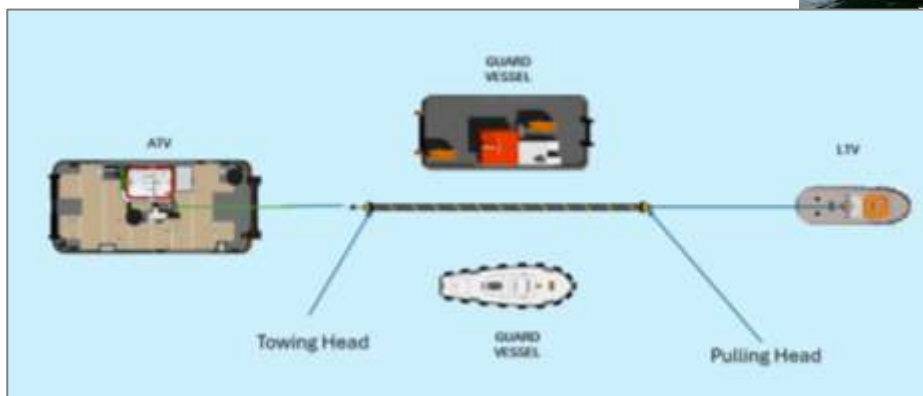


Figure 2 - Towage configuration during pipe-pull

Valour supported by the guard vessels **Paul-D and Kirkwall Bay** as pictured, right. The towage configuration is shown in **Figure 2**.

Once ready to commence the pipe-pull, the pipe will be fed through the MBIF jetty head piles, onto the JUB **NP497** to begin the pull in. During the initial phase of the pull-in, a significant length of the floating pipeline will extend to seaward and will be tended by the **MTS Valour, Paul D and C-Trojan** as shown in **Figure 3**.

The image shows the likely configuration of the pipeline and supporting vessels on the flood tide.

A mirror image of the configuration will be seen on the ebb tide.

Once the pipe-pull and diving operations are complete, the harbour will re-open to other vessels.

For the avoidance of doubt, a confirmation Notice to Mariners will be promulgated to announce the closure of the harbour once works begin.

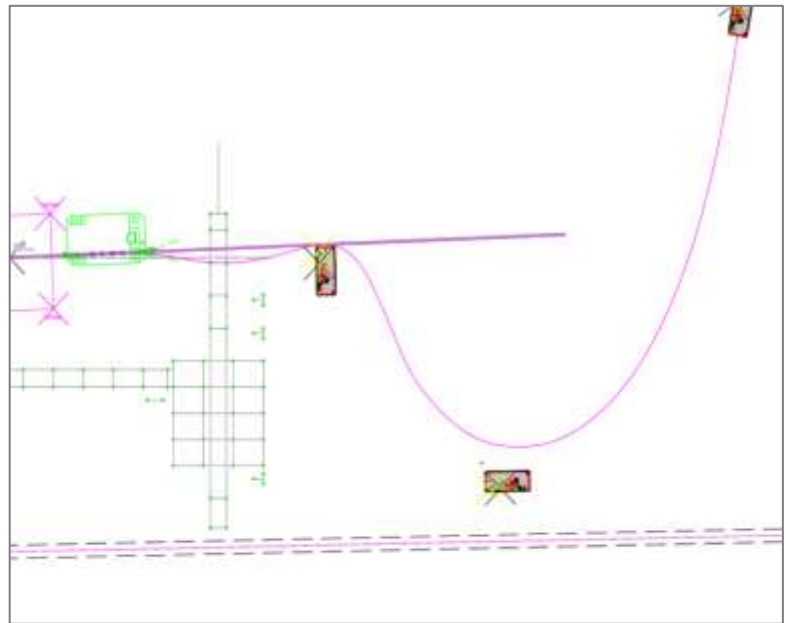


Figure 3 - Indicative vessel and pipeline positions during pipe pull-through

Neil Glendinning

SZC Harbour Master

Date: 14/04/2026

Any further enquiries regarding this Notice to Mariners should be directed to:

Harbour.Master@sizewellc.com

This notice will be cancelled on completion of works.

Notice to Mariners in Force

No.15 of 2024, No.19 of 2024, No.10 of 2025, No.6 of 2026, No.7 of 2026, No.8 of 2026

No.11 of 2026, No.12 of 2026, No.14 of 2026 and No.18 of 2026.